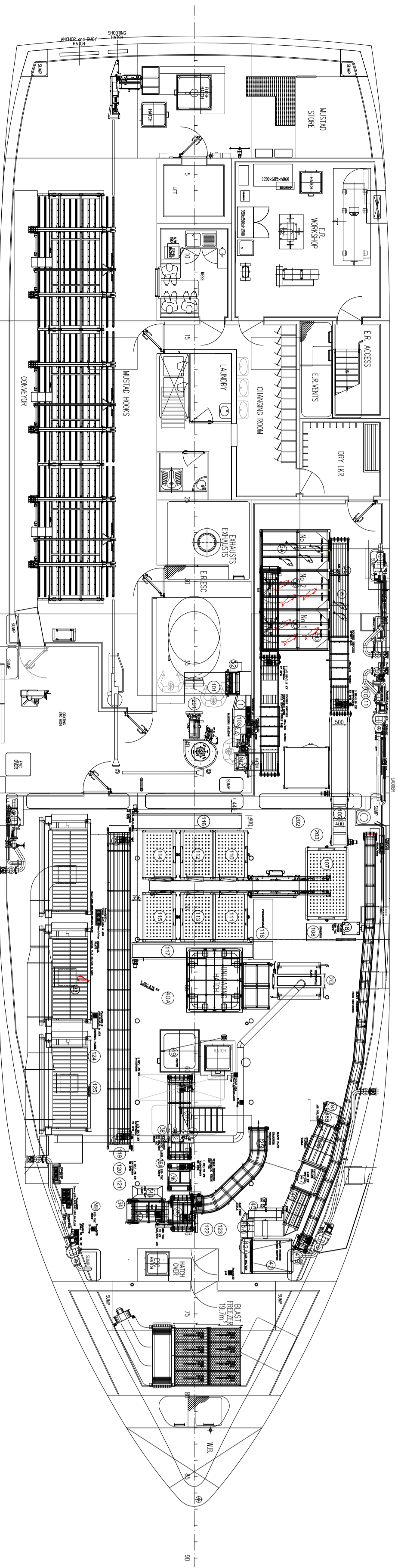
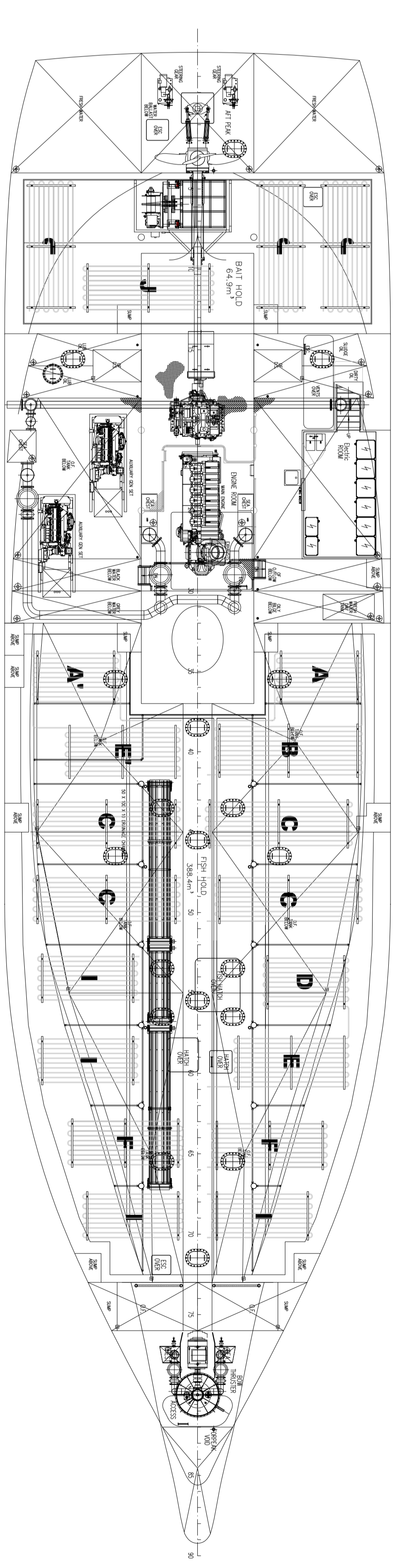
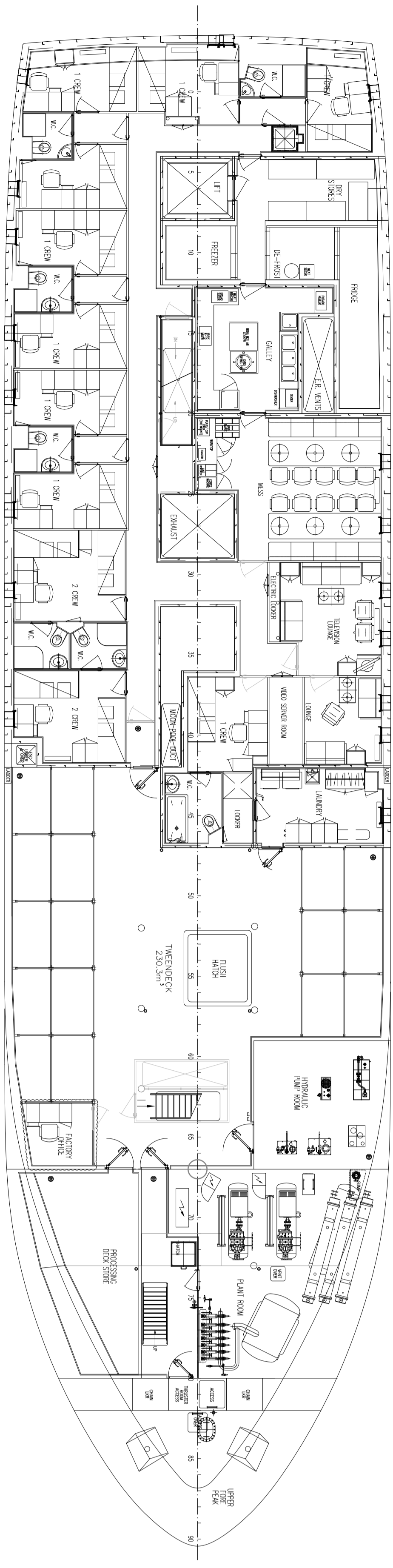
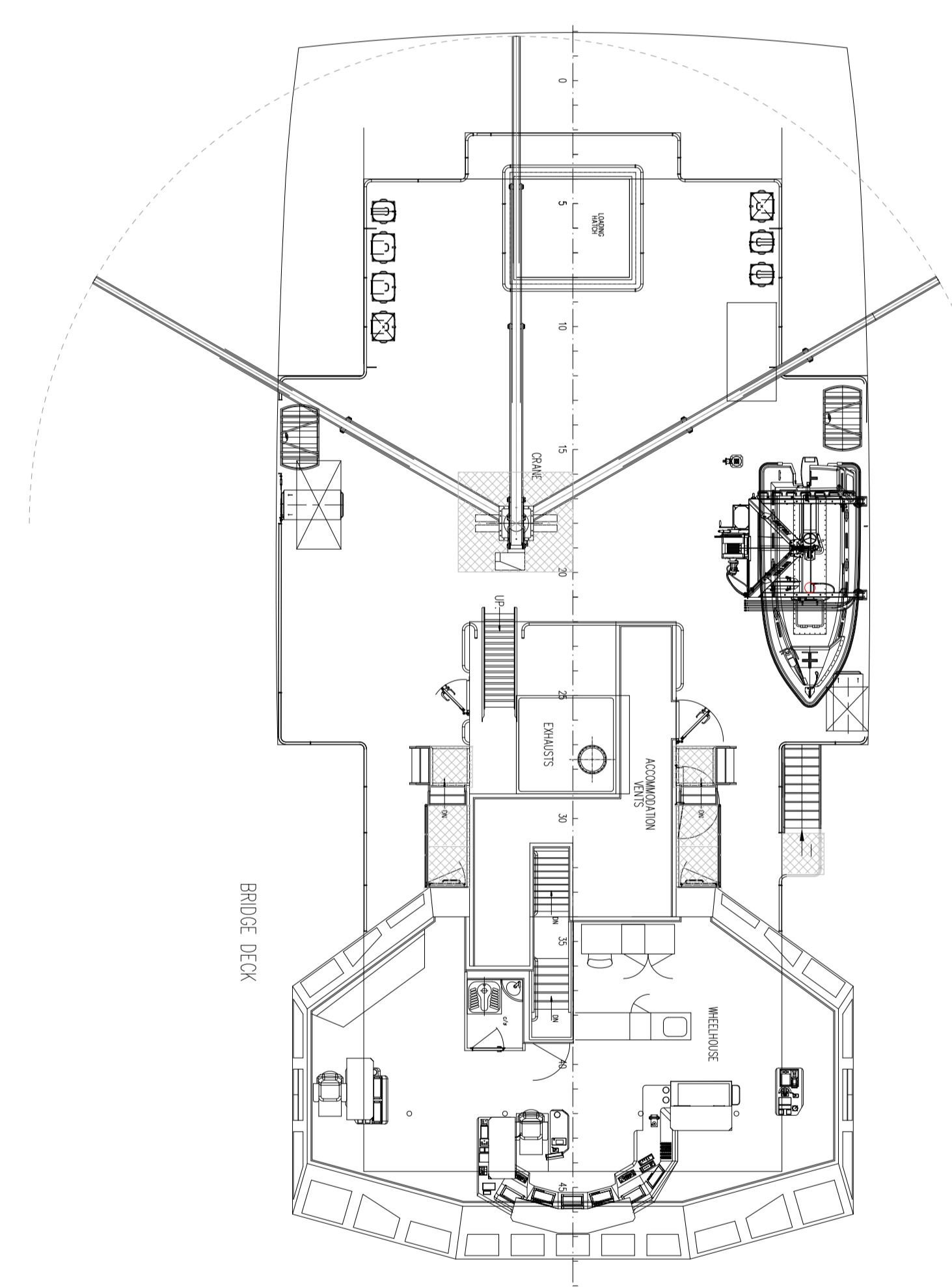
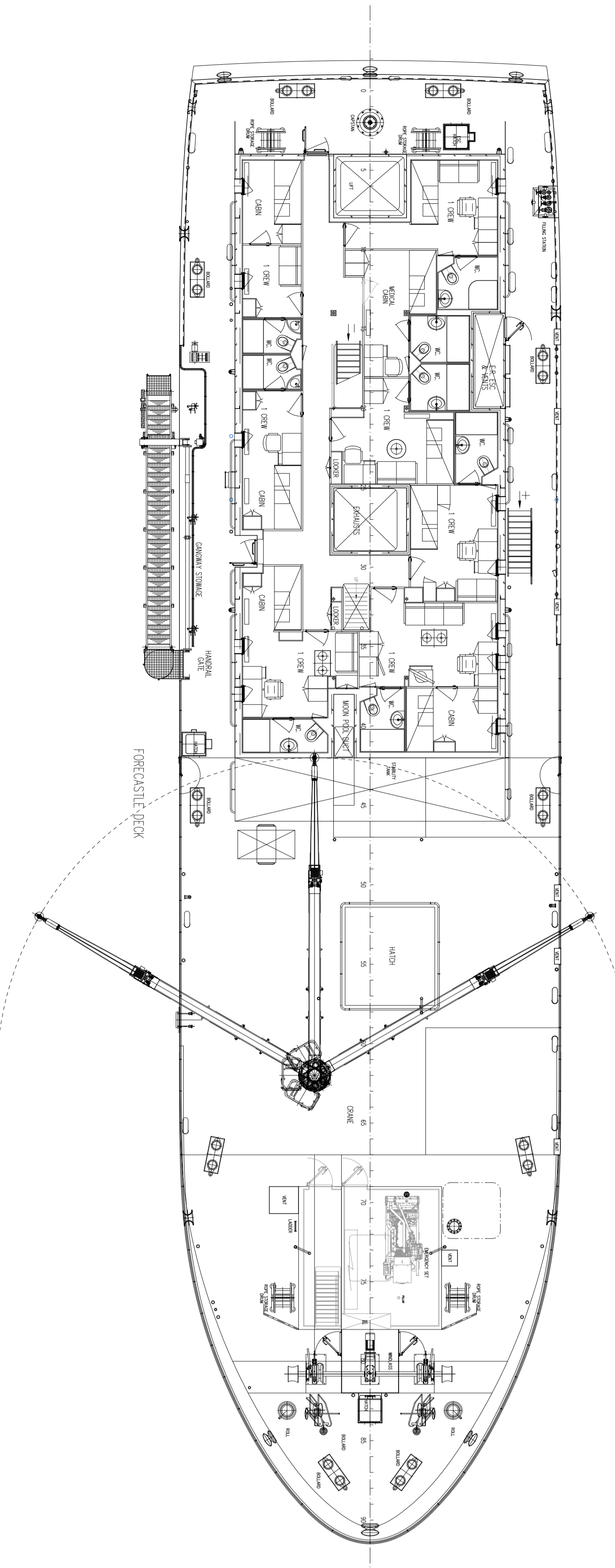
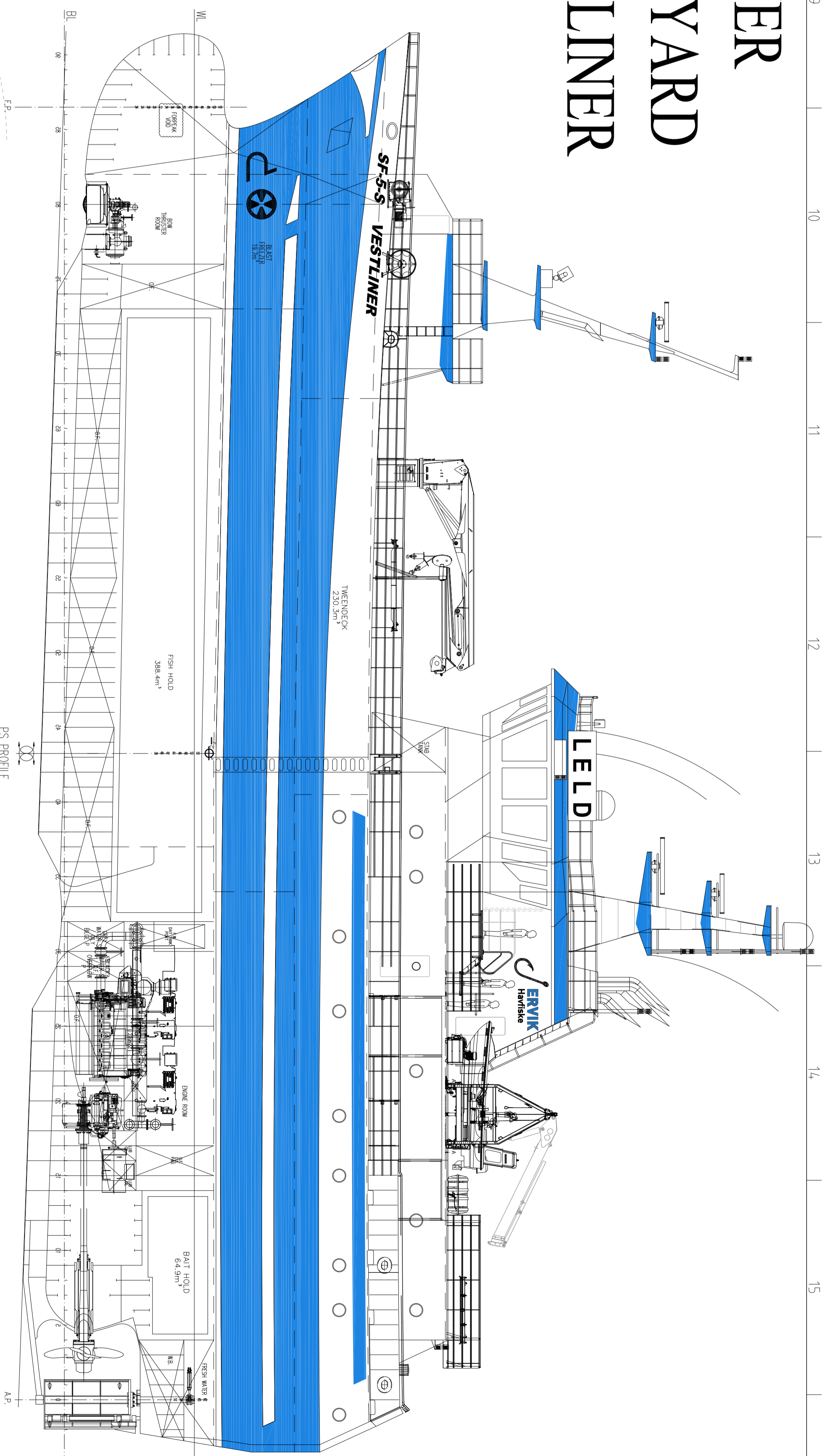
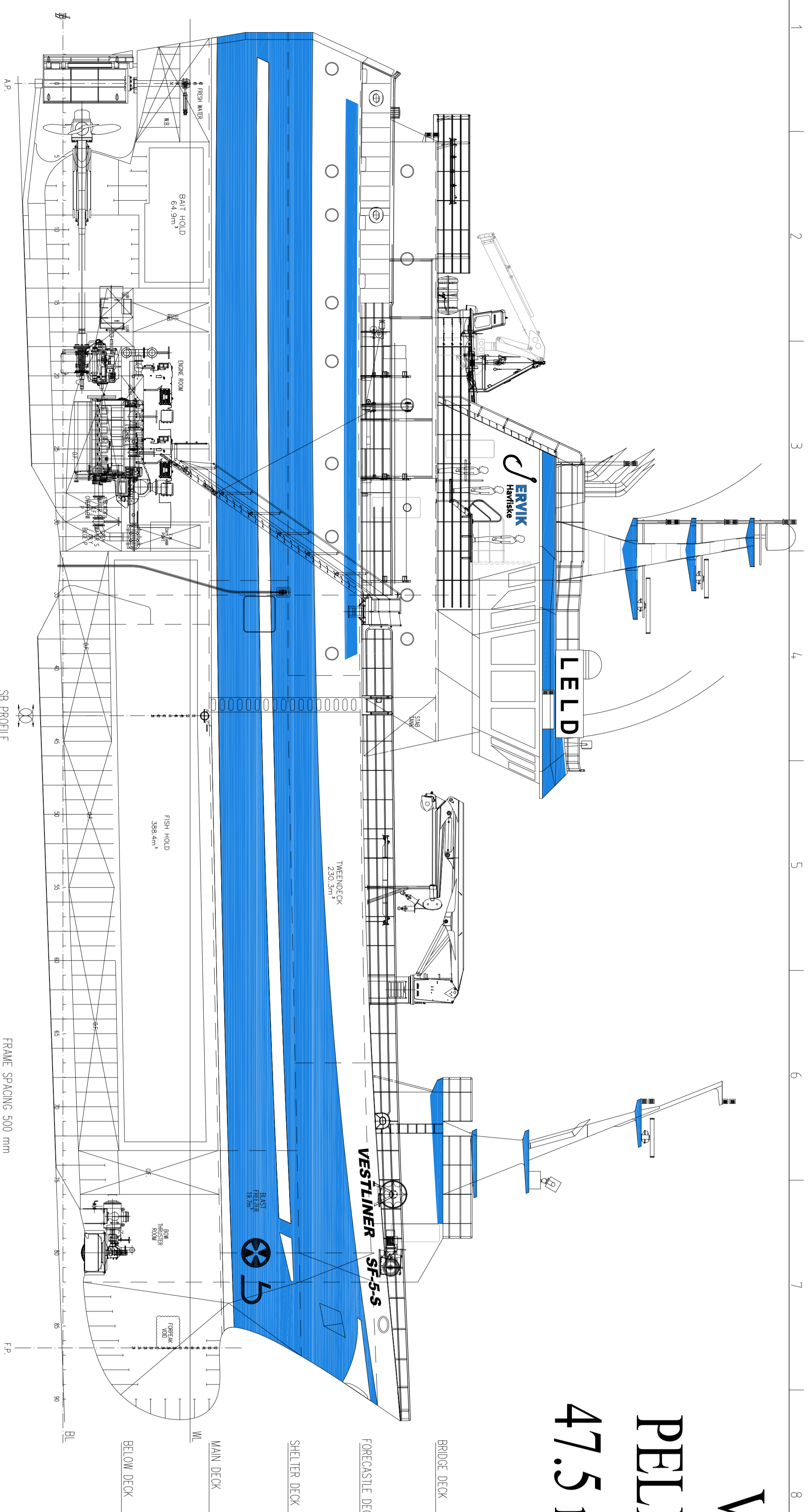


VESTLINER PELLA SHIPYARD 47.5 m LONGLINER



TECHNICAL SPECIFICATION

MAIN DIESEL ENGINE MAK 6M20C 1200kW at 1000rpm
THREE-PHASE GENERATOR AEM SE400S4 450kW/400V at 1500rpm
PROPULSION BERG BCP760 PROPELLER UNIT 1200kW at 200rpm
GEARBOX REINTJES REDUCTION GEAR 1000rpm ratio 4.955:1
AUXILIARY GENERATORS TWO CAT C:18 DIESEL GENERATOR SET
EMERGENCY GENERATOR ONE CAT C:9 DIESEL GENERATOR SET

MAIN DIMENSIONS

LENGTH O.A. 47.50 m
LENGTH B.P. 43.25 m
RULE LENGTH 43.69 m
BREADTH MLD 12.00 m
DEPTH MLD MAIN DECK 5.00 m
DEPTH MLD SHELTER DECK 7.70 m
DEPTH MLD FORECASTLE DECK 10.17 m

CLASSIFICATION
 DNV - T1A FISHING VESSEL EO ICE 1C

BNS | 01.08.17 | Volumes and office added. Rev. C02



This drawing is Rev. by Skipskompetanse

Skipskompetanse
 www.skipskompetanse.no

TITLE	47.50 m LONGLINER	REV	2002-08/11
GENERAL ARRANGEMENT		DESIGNED BY	1
DATE	22/8/11	DATE	22/8/11
SCALE	1:100 @ A0		

MACDUFF SHIP DESIGN LTD. LOW SHORE MACDUFF
 ABERDEENSHIRE, SCOTLAND AB44 1RE
 TEL 01264 838925 FAX 01264 838385
 EMAIL: info@macduffshipltd.co.uk

